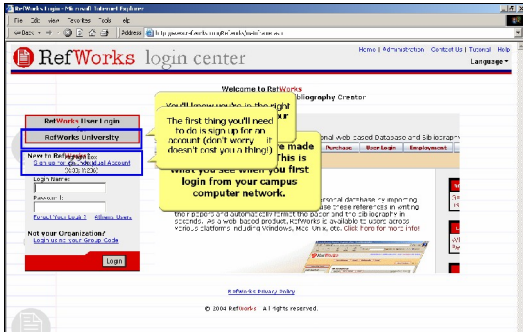
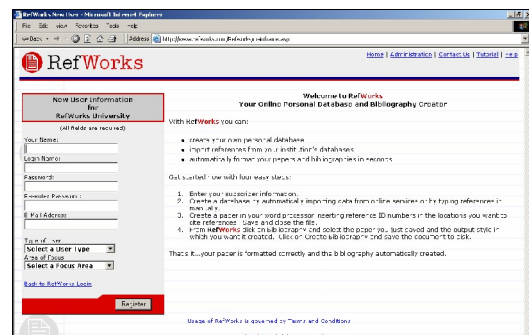
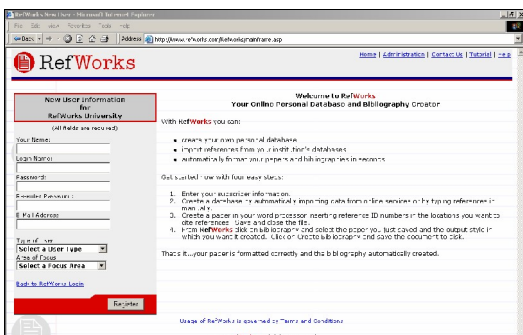
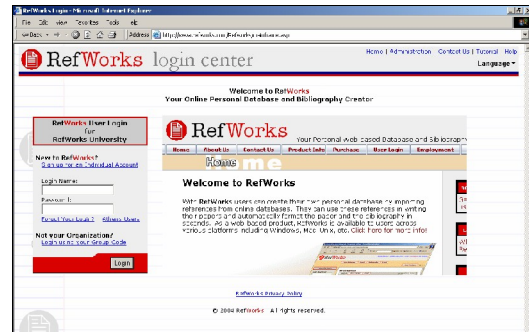


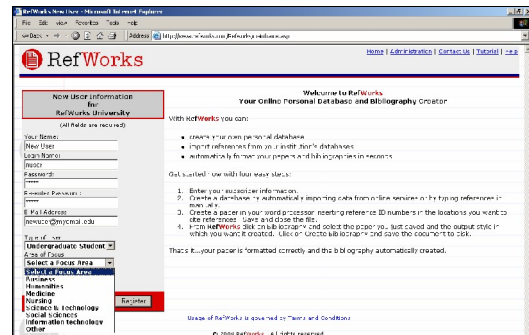
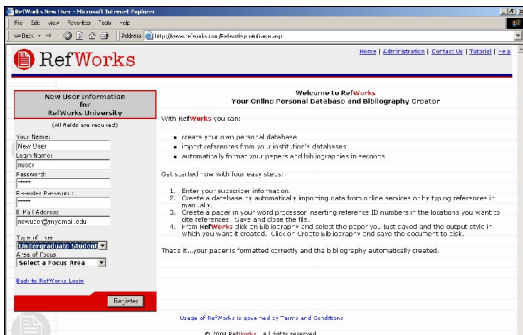
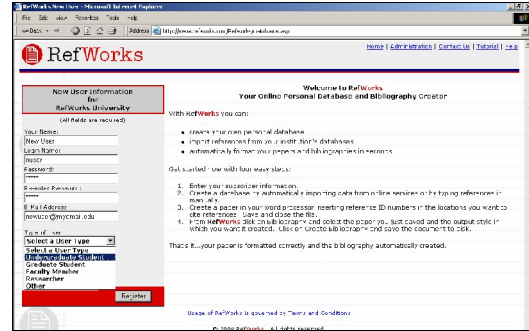
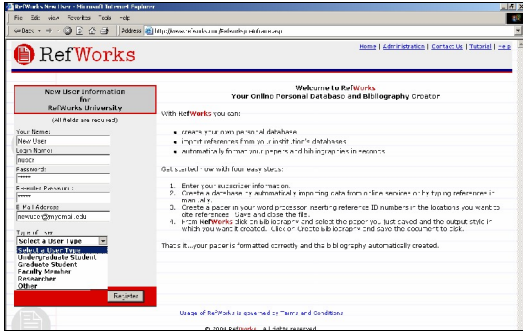
RefWorks – Logging Into RefWorks

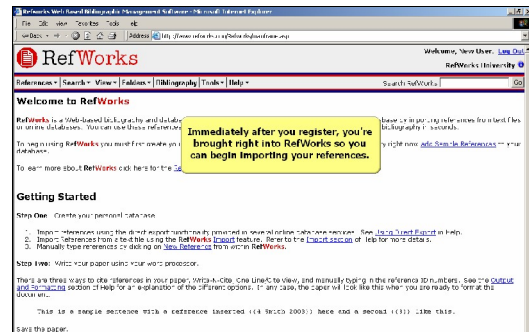
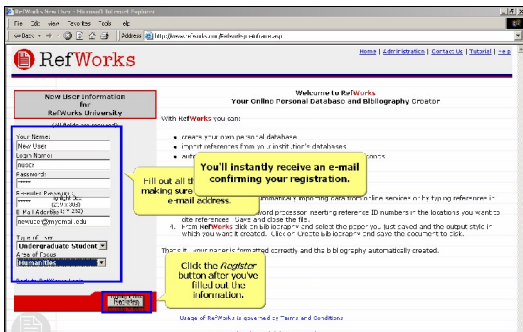
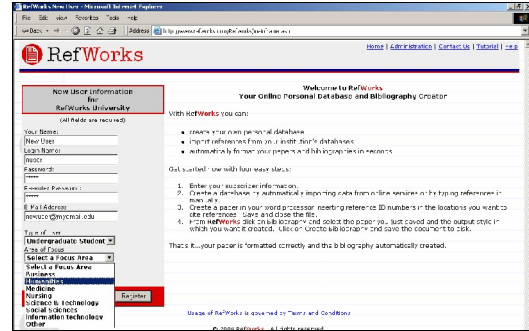
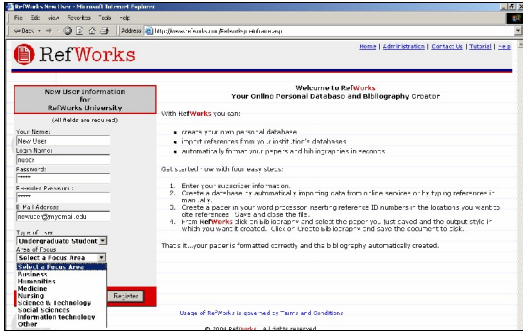


Congratulations. You've made it to the login page. This is what you see when you first login from your campus computer network. You'll know you're in the right place because you'll see your institution's name here. The first thing you'll need to do is sign up for an account (don't worry -- it doesn't cost you a thing!)



RefWorks – Logging Into RefWorks

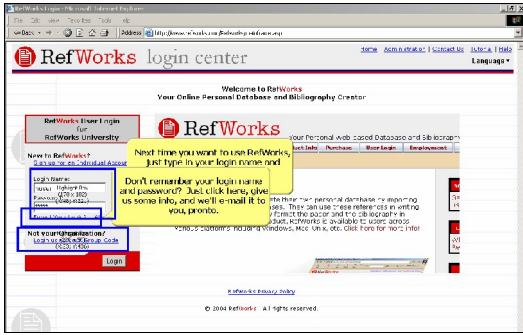




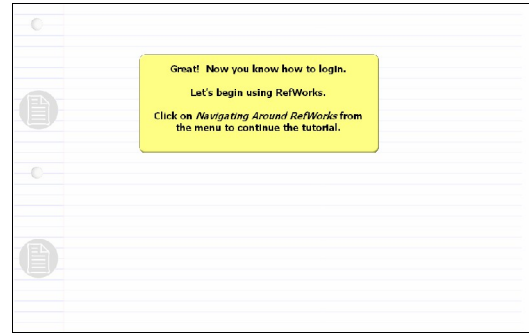
Fill out all the information, making sure to include your e-mail address.
 Click the Register button after you've filled out the information.
 You'll instantly receive an e-mail confirming your registration.

Immediately after you register, you're brought right into RefWorks so you can begin importing your references.

RefWorks – Logging Into RefWorks



Next time you want to use RefWorks, just type in your login name and password on the login page.
Don't remember your login name and password? Just click here, give us some info, and we'll e-mail it to you, pronto.
If this is not your Institution's login page, click here to go to our "public" login screen (you will need your group code to log in from the public screen).



Great! Now you know how to login.

Let's begin using RefWorks.

Click on *Navigating Around RefWorks* from the menu to continue the tutorial.